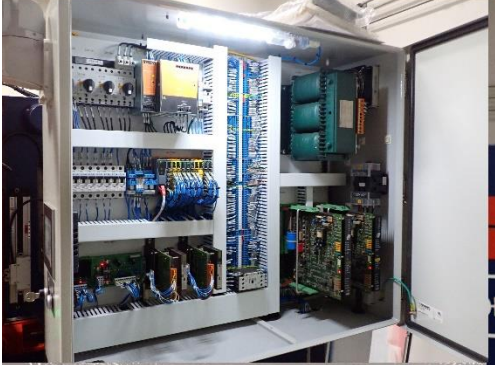


# Beyeler "Euro" 33 ton 5ft Synchronized Press Brake



- Upper ram configured for European style tooling
- Y1,Y2,X,R,Z1,Z2
- New Cybelec Modeva Pac CNC control
- New B&R safety PLC system with touch screen for mode selection and diagnostics
- New Pilz PSEnvip camera safety system

|                     |                    |
|---------------------|--------------------|
| Pressing Capacity   | 33 ton             |
| Year of manufacture | 1984               |
| Bed length          | 60 in              |
| Y Axis Stroke       | 10.75 in           |
| Daylight (Closed)   | 5.5 in             |
| Daylight (Open)     | 11.4 in            |
| Weight              | 3,925 lbs          |
| X Axis Travel       | 19.7 in            |
| R Axis Travel       | 3.75 in            |
| Programmable Axes   | Y1,Y2,X,R,Z1,Z2    |
| Control System      | Cybelec Modeva Pac |
| Light Guards        | Pilz Light Guards  |



This machine has been retrofitted with a new Cybelec Modeva Pac control system and a new safety PLC system by Control Works. The safety PLC system has a touchscreen HMI mounted flush on the side of the electrical panel to control motor start and mode select functions, additional menus allow for switching off the light guards and diagnostic screens to check status of external devices such as the footpedal, two hand control and hydraulic valves. The machine also has new Y1,Y2 linear encoders, a new electrical panel, new high/low speed valves and new servovalves  
All work is fully documented with a complete set of electrical schematics.

**Machine Price \$36,500 – F.O.B Control Works, St Charles IL**