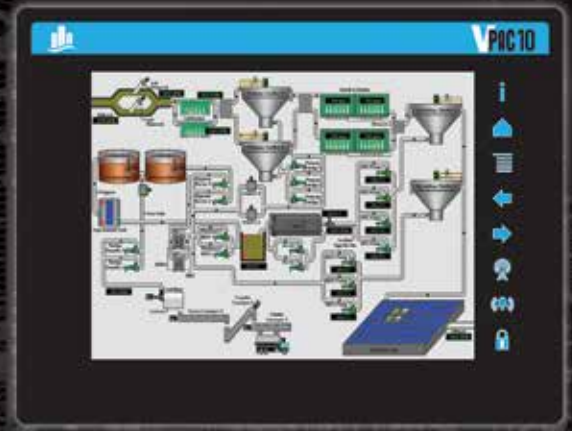


# VPAC 10

## VERSATILE PROCESS AUTOMATION CONTROLLER



### OVERVIEW

The VPAC 10 is a controller that combines control, user interface, I/O and networking into a single integrated package with connectivity to a variety of devices. It can be interfaced with other VPAC devices, drives, PLCs, barcode readers, SCADA, printers and serial I/O.

### FEATURES

- Bright, color graphical LCD display with built-in navigation keys
- Displays trends, gauges, meters and animations
- High performance graphic processing
- Advanced control capabilities including; floating point, multiple auto-tuning PID loops and string handling
- Full featured built-in I/O including advanced high-speed digital inputs (500kHz)
- Expansion I/O up to 2048 (DI/DO) and 512 (AI/AO)
- 32GB removable storage for programs, data logging and screen captures
- USB 2.0 (mini-B) for programming and data access
- USB 2.0 (USB A) for flash drives up to two terabytes (2TB)
- Dual CAN networking port for communication with PCs and programming of controller
- Configurable serial protocols
- Dual Built-in 100Mbps Ethernet ports support an integrated Web Server, FTP Host, Email, Modbus TCP Master/Slave and programming
- Low-temperature options available

### SPECIFICATIONS

#### General:

- Required Power (Steady State): 650mA @ 24 VDC
- Required Power (Inrush): 25A for < 1ms @ 24VDC Switched
- Primary Power Range: 10-30VDC
- Relative Humidity: 5 to 95% non-condensing
- Clock Accuracy: +/- 20 PPM Maximum at 25°C (+/- 1 minute per month)
- Operating Temp: 0°C to +60°C
- Storage Temp: -40°C to +60°C
- Weight: 4.375 lbs (without I/O)
- UL, CE, cUL, Made in America

#### Display:

- Display Type: 10.4" VGA TFT (550 nit typical)
- Resolution: 640x480
- Color: 16-bit (65,536)
- Screen Memory: 27MB
- User-Programmable Screens: 1023
- Backlight: LED - 50,000 hour life

#### Connectivity:

- Serial Ports: (2) RS-232/RS-485
- Dual CAN: Remote I/O, Peer-to-Peer
- Dual Ethernet: 10/100 Mb, Modbus TCP Master/Slave, HTTP, FTP, SMTP, Ethernet, IP and Programming



844-4PRIMEX (477-4639)  
WWW.PRIMEXCONTROLS.COM