



# PRIMEX

MUNICIPAL AND INDUSTRIAL WATER CONTROL SOLUTIONS



[www.primexcontrols.com](http://www.primexcontrols.com)

# Pump Watch™



## What is Pump Watch™?

A monitoring system designed for wastewater pump stations and similar applications

- Utilizes cellular network (CDMA; GSM option)
- Web-based monitoring
- Data logging and trending of critical information
- Alarm notifications via email and text message
- A *simple* and *effective* solution



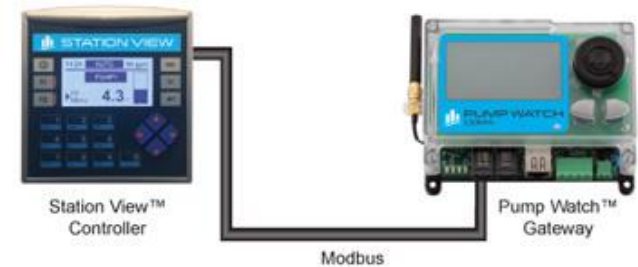
*Pump Watch™ Retro*

# Pump Watch™



## Pump Watch™ Packaging

- Pump Watch™ *Gateway*: for use with select PRIMEX controllers in complete control panels
- Pump Watch™ *Retro*: for retrofit or upgrades to existing pump station control panels
- Both packages provide the same capabilities



Pump Watch™ Retro

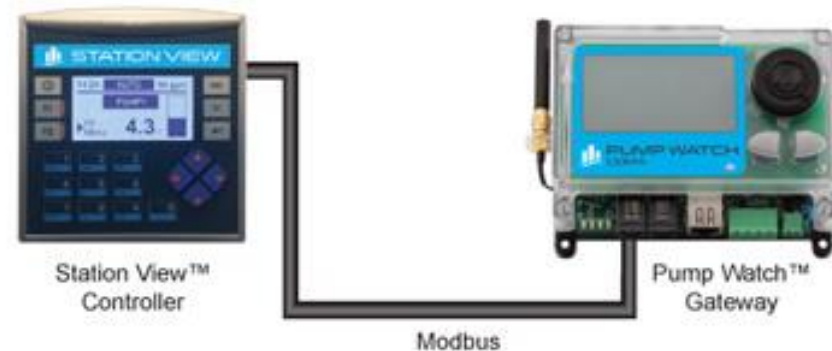
# Pump Watch™



## Pump Watch™ Gateway

Provides 'Plug and Play' simplicity when used with select PRIMEX® controllers in complete control panels furnished by PRIMEX®

- Station View™ (as shown)
- Energy View®
- Level View™
- No I/O wiring required
- Includes current transducer
- Part number 1039625  
(with 3dB antenna; CDMA)
- Part number 1038899  
(Optional high gain antenna with 40' low loss cable)



# Pump Watch™



## Pump Watch™ *Retro*

Designed for retrofit or upgrade to an existing pump station control panel

- NEMA 4X non-metallic outdoor enclosure
- 24 hour battery backup
- Terminal strip for customer connections
- Includes current transducer; pump amps
- Part number 1038249 (with 3dB antenna; CDMA)
- Part number 1038899 (Optional high gain antenna with 40' low loss cable)
- Optional level sensor for transducer control, volumetric flow calculations



# Pump Watch™



## Monitoring

The following information is monitored by Pump Watch™:

- Pump Data - Horsepower, Voltage, FLA
- Station In-Flow (GPM)
- Wet Well Level (Feet)
- Pump Amps (Pumps 1, 2, 3)
- Pump GPM (Pumps 1, 2, 3)
- Pump Starts/24 hours (Pumps 1, 2, 3)
- Pump Run Time/24 hours (Pumps 1, 2, 3)
- Pump Running (Pumps 1, 2, 3)
- Pump Fault (Pumps 1, 2, 3)
- Pump In Auto (Pumps 1, 2, 3)
- Pump Dry Run Fault
- Power Fail
- General Station Fault
- High and Low Level Alarms (Transducer)
- High and Low Float
- Pump Run Time Fault

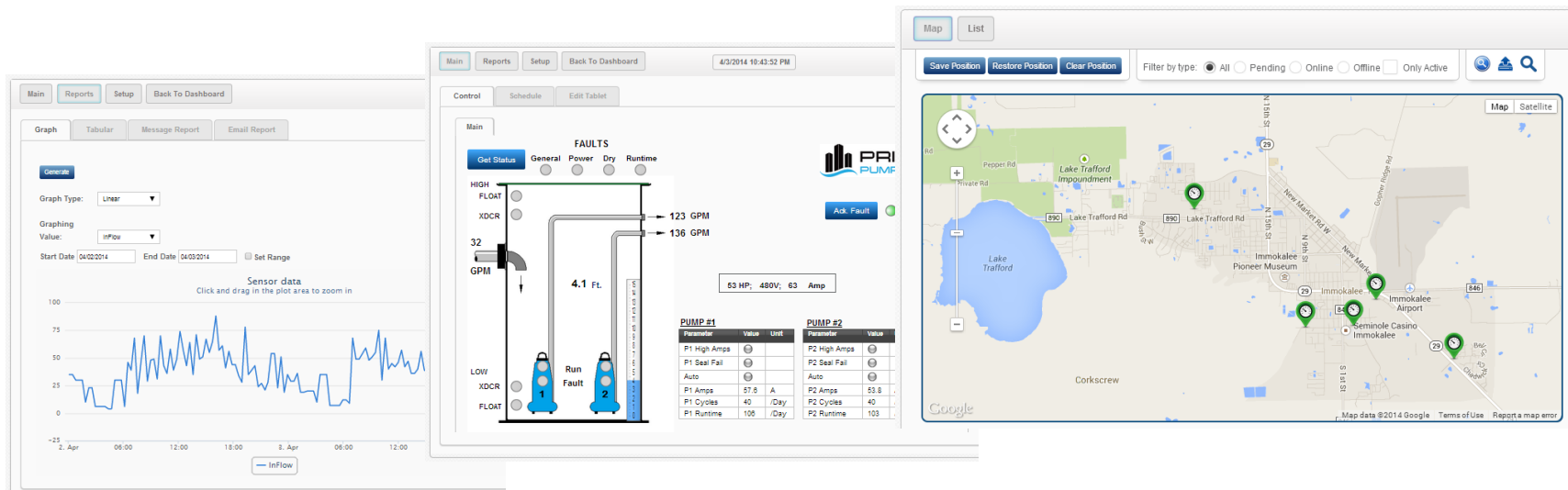


# Pump Watch™



## From the Web

Complete monitoring and configuration via password-accessed website

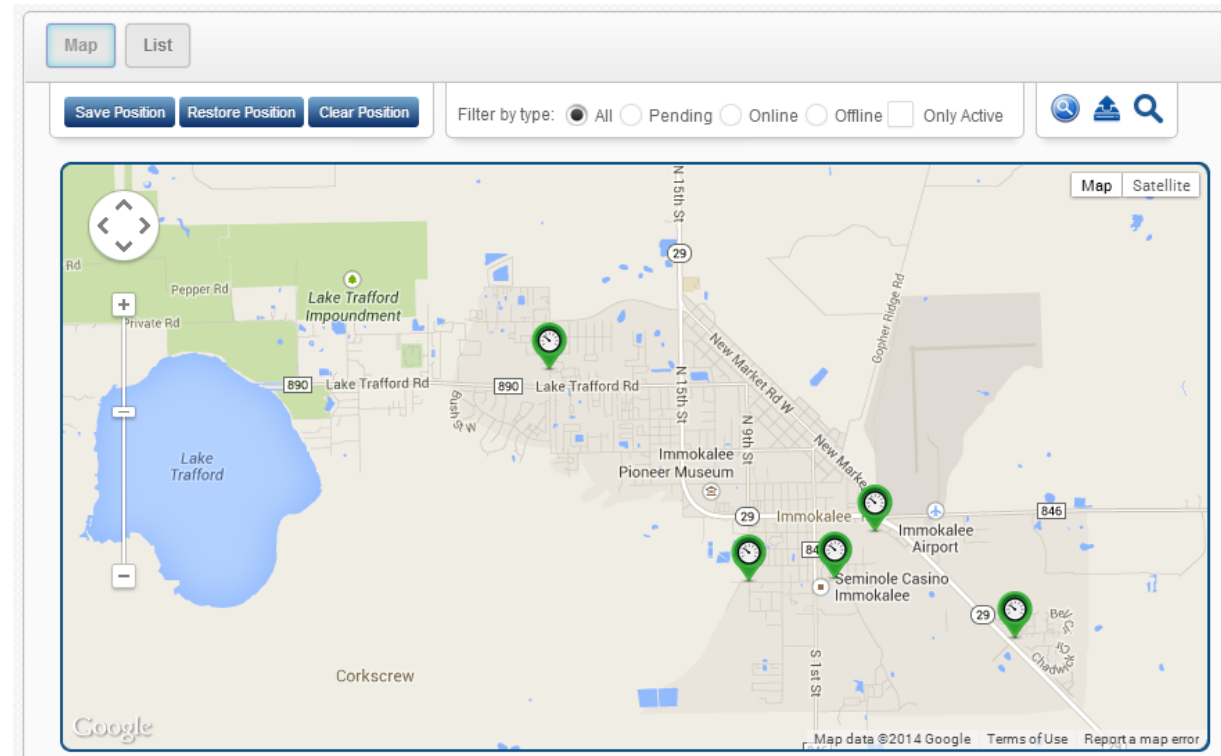


# Pump Watch™



## From the Web

- System map





# Pump Watch™



## From the Web

- Pump station detail

The screenshot displays the Primex Pump Watch web interface. At the top, there are navigation buttons for 'Main', 'Reports', 'Setup', and 'Back To Dashboard', along with a timestamp '4/3/2014 10:43:52 PM'. Below this, there are tabs for 'Control', 'Schedule', and 'Edit Tablet'. The main content area is titled 'Main' and features a 'Get Status' button and a 'FAULTS' section with indicators for 'General', 'Power', 'Dry', and 'Runtime'. A schematic diagram shows a tank with a 'HIGH FLOAT' and 'LOW FLOAT' sensor, an 'XDCR' (X-ray detector) sensor, and a '32 GPM' inlet. Two pumps, labeled '1' and '2', are shown at the bottom. A vertical scale indicates a height of '4.1 Ft.'. Flow rates are shown as '123 GPM' and '136 GPM'. A status box displays '53 HP; 480V; 63 Amp'. An 'Ack. Fault' button and an 'OK' indicator are also present. Two tables provide performance data for 'PUMP #1' and 'PUMP #2'.

Parameter	Value	Unit
P1 High Amps		
P1 Seal Fail		
Auto		
P1 Amps	57.6	A
P1 Cycles	40	/Day
P1 Runtime	106	/Day

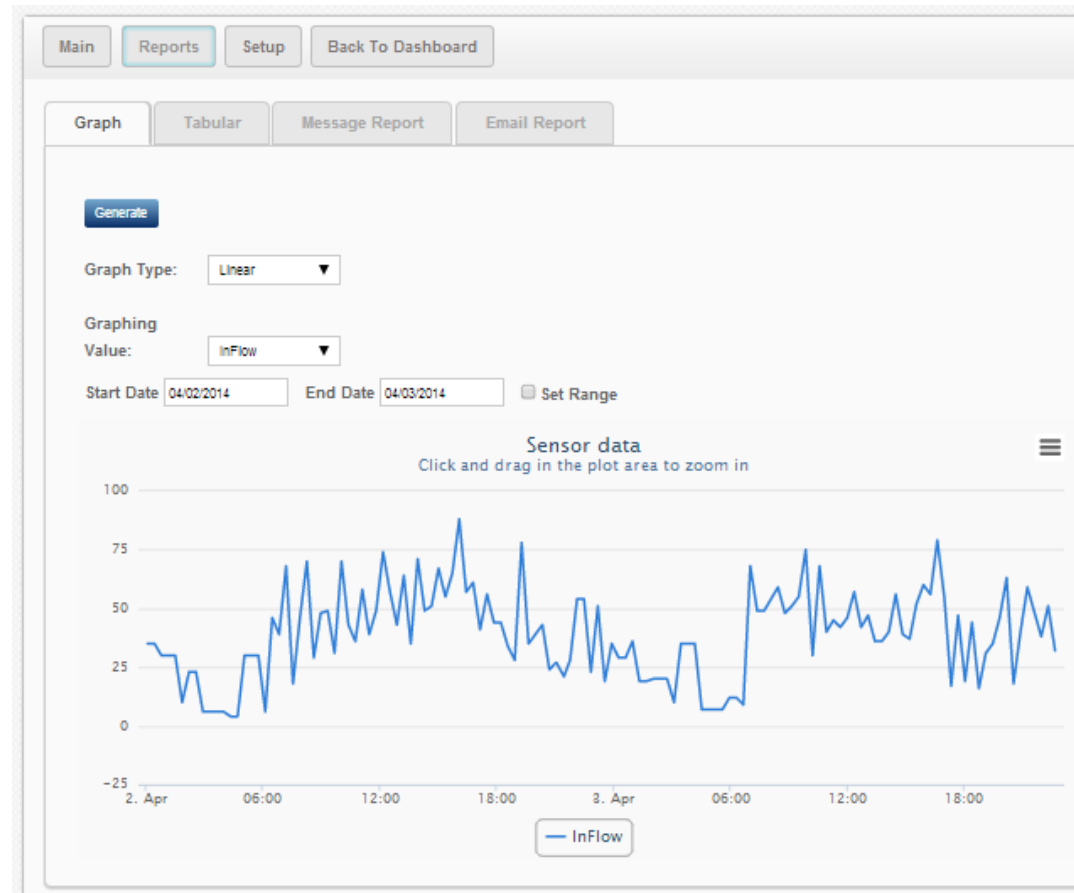
Parameter	Value	Unit
P2 High Amps		
P2 Seal Fail		
Auto		
P2 Amps	53.8	A
P2 Cycles	40	/Day
P2 Runtime	103	/Day

# Pump Watch™



## From the Web

- Trend charts
- Data export



# Pump Watch™



## From the Web

- Email report
- Alarms

Station P - 7711

Graph Tabular Message Report **Email Report**

Generate Export Print

Start Date 03/02/2014 End Date 04/21/2014

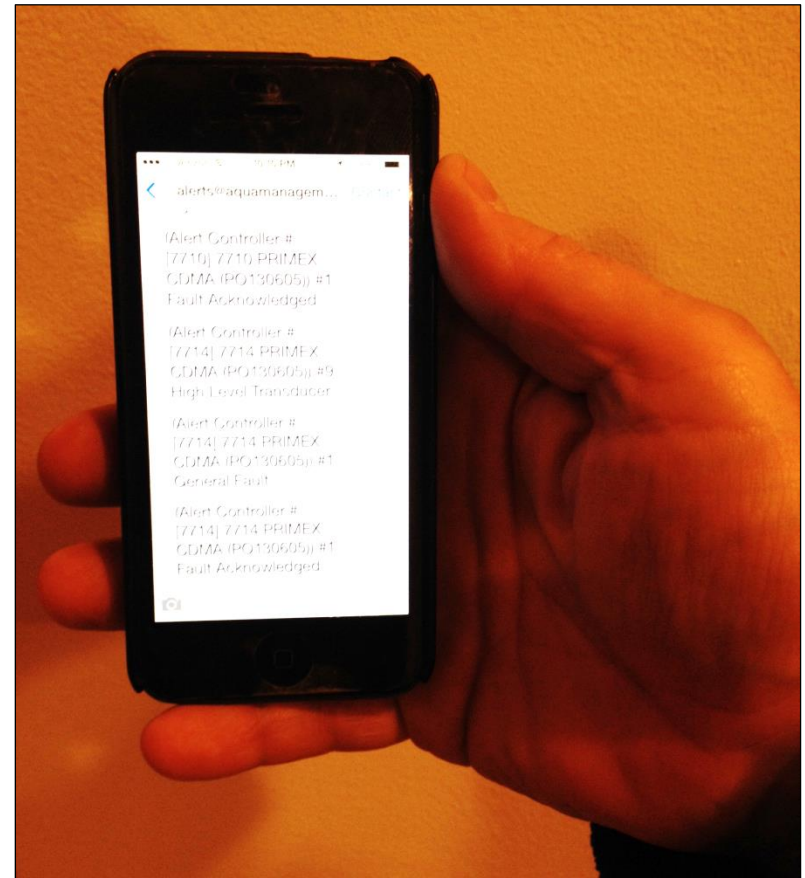
Message Time	Delivered Time	Address	Subject	Body
3/31/2014 12:56:24 PM	3/31/2014 12:56:24 PM	hectorramos@iw-sd.com,2395030079@bt.att.net	Alert Controller # [7711] Station P (Immokalee WSD)	#1 Fault Acknowledged
3/18/2014 12:17:44 PM	3/18/2014 12:17:44 PM	hectorramos@iw-sd.com,2395030079@bt.att.net	Alert Controller # [7711] Station P (Immokalee WSD)	#1 Fault Acknowledged
3/18/2014 9:12:43 AM	3/18/2014 9:12:43 AM	hectorramos@iw-sd.com,2395030079@bt.att.net	Alert Controller # [7711] Station P (Immokalee WSD)	#1 Fault Acknowledged
3/17/2014 8:35:34 AM	3/17/2014 8:35:34 AM	hectorramos@iw-sd.com,2395030079@bt.att.net	Alert Controller # [7711] Station P (Immokalee WSD)	#1 Fault Acknowledged
3/15/2014 9:13:22 AM	3/15/2014 9:13:22 AM	hectorramos@iw-sd.com,2395030079@bt.att.net	Alert Controller # [7711] Station P (Immokalee WSD)	#1 Fault Acknowledged
3/14/2014 8:52:16 PM	3/14/2014 8:52:16 PM	hectorramos@iw-sd.com,2395030079@bt.att.net	Alert Controller # [7711] Station P (Immokalee WSD)	#1 Fault Acknowledged
3/14/2014 8:37:16 PM	3/14/2014 8:37:16 PM	hectorramos@iw-sd.com,2395030079@bt.att.net	Alert Controller # [7711] Station P (Immokalee WSD)	#11 Low Level transducer
3/14/2014 8:37:15 PM	3/14/2014 8:37:15 PM	hectorramos@iw-sd.com,2395030079@bt.att.net	Alert Controller # [7711] Station P (Immokalee WSD)	#1 Fault Acknowledged
3/14/2014 8:31:17 PM	3/14/2014 8:31:17 PM	hectorramos@iw-sd.com,2395030079@bt.att.net	Alert Controller # [7711] Station P (Immokalee WSD)	#12 Low Level Transducer -Reset
3/14/2014 8:29:16	3/14/2014 8:29:16	hectorramos@iw-sd.com,2395030079@bt.att.net	Alert Controller # [7711] Station P (Immokalee WSD)	#11 Low Level transducer

# Pump Watch™



## From the Web

- Configure account
- Configure alarm notifications
  - Email messages
  - Text messages



# Pump Watch™



## Pump Watch™ is...

A monitoring system designed for wastewater pump stations and similar applications

- Utilizes cellular network (CDMA; GSM option)
- Web-based monitoring
- Data logging and trending of critical information
- Alarm notifications via email and text message
- A *simple* and *effective* solution



*Pump Watch™ Retro*



# PRIMEX

MUNICIPAL AND INDUSTRIAL WATER CONTROL SOLUTIONS



## Thank You

[CLICK HERE](#) for more information

[www.primexcontrols.com](http://www.primexcontrols.com)